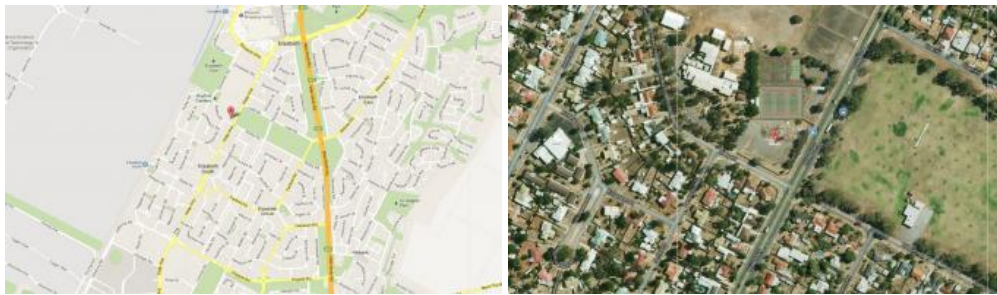




**46 Phillip Highway, Elizabeth South**



**PRIME DEVELOPMENT!**

- Total Site Area is approximately 4,601 sqm
- Corner allotment frontage to Philip Highway and Ridley Road
- All desired and essential urban services are available to the subject property
- Excellent exposure to passing traffic and ready access via the side street frontage
- The recent redevelopment of Elizabeth City Centre has improved the profile of the locality
- Quality investment property

**INSPECTION A MUST!**

*The above information provided has been furnished to us by the vendor/s. We have not verified whether or not that information is accurate and do not have any belief in one way or the other in its accuracy. We do not accept any responsibility to any person for its accuracy and do no more than pass it on. All interested parties should make and rely upon their own inquiries in order to determine whether or not this information is in fact accurate.*

4,601 m2

<b>Price</b>	SOLD
<b>Property Type</b>	Commercial
<b>Property ID</b>	440
<b>Land Area</b>	4,601 m2
<b>Floor Area</b>	4,601 m2

**Agent Details**

Nick Mastrangelo - 0401 790 753  
 Pasquale Mastrangelo - 0409 465 863

**Office Details**

Adelaide  
 Unit 4/ 60 West Terrace, Adelaide  
 SA 5000 Australia  
 08 8212 0140



MASTRACORP  
 REAL ESTATE