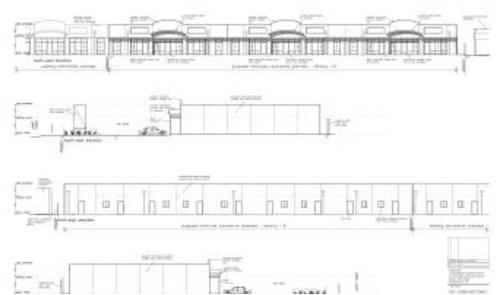




**801 Port Rd, Woodville**



## AVAILABLE TENANCIES FOR LEASE – NINE (9) SPACES

Mastracorp Real Estate is pleased to offer **nine prime tenancies** for lease, ranging from **123.1 sqm to 153.4 sqm**, available from **August 2025**. These versatile spaces are ideal for a range of business uses, including retail, office, or consulting operations.

These tenancies offer excellent potential for businesses looking for a high-traffic location with modern amenities and ample parking. Inspection is a must to fully appreciate the space and location.

### Property Features:

- Retail / Office / Consulting Space
- Tenancy Sizes Ranging from 123.1 sqm to 153.4 sqm
- Flexible open floor plan layout
- Flexible lease terms and conditions
- Availability from August 2025
- Toilet Amenities (Within each tenancy)
- Ample Car Parking
- Flexible Terms and Conditions

INSPECTION IS A MUST

If you would wish to inspect the property, please contact our Lead Agents

**Price** CONTACT AGENT  
**Property Type** Commercial  
**Property ID** 2540

### Agent Details

Pasquale Mastrangelo - 0409 465 863  
 Dion Mastrangelo - 0431 576 848  
 MRE Office - 08 82120140

### Office Details

Adelaide  
 Unit 4/ 60 West Terrace, Adelaide  
 SA 5000 Australia  
 08 8212 0140



MASTRACORP  
 REAL ESTATE

Jordan House on 0405 488 052, Pasquale Mastrangelo 0409 465 863 or our  
Landline on (08) 8212 0140.

*The above information provided has been furnished to us by the vendor/s. We have not verified whether or not that information is accurate and do not have any belief in one way or the other in its accuracy. We do not accept any responsibility to any person for its accuracy and do no more than pass it on. All interested parties should make and rely upon their own inquiries in order to determine whether or not this information is in fact accurate.*