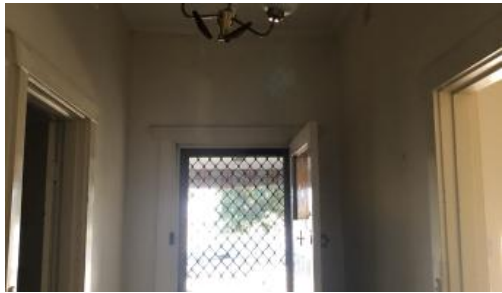


13 Lydia St, Plympton



Original 3 Bedroom Solid Brick Home

All original 3 Bedroom Solid Brick Home

- Timber Laminate Kitchen joinery, ample bench space with gas cook top
- Carpeted Bedrooms, Study, Entry and Lounge
- Single Garage with Roller Door and direct access to the back of the property
- Large Pergola with a paved area for year-round entertaining/ BBQ
- Massive yard of grass and small garden shed

The above information provided has been furnished to us by the vendor/s. We have not verified whether or not that information is accurate and do not have any belief in one way or the other in its accuracy. We do not accept any responsibility to any person for its accuracy and do no more than pass it on. All interested parties should make and rely upon their own inquiries in order to determine whether or not this information is in fact accurate.

🛏 3 🗺 1 🚗 2

Price \$ 440 - \$ 460
Property Type Rental
Property ID 2189

Agent Details
 Mastracorp Rental Team -
 0882120140

Office Details
 Adelaide
 Unit 4/ 60 West Terrace, Adelaide
 SA 5000 Australia
 08 8212 0140

